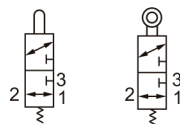
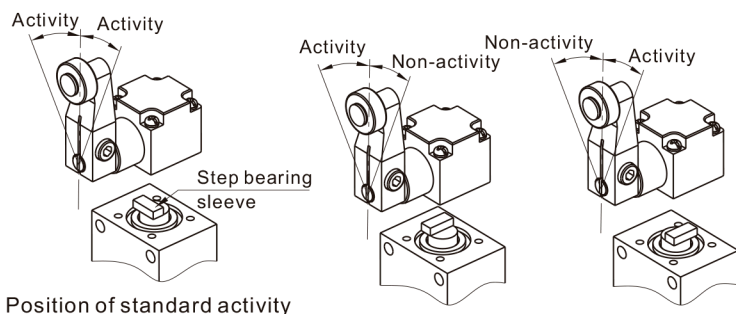


## Symbol

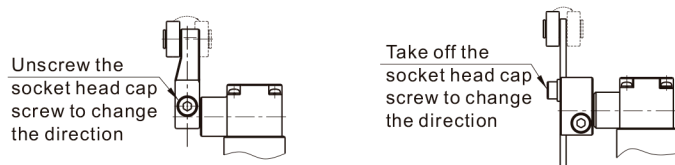


## Product feature

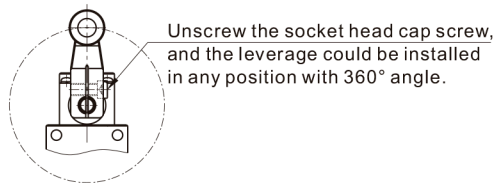
1. The activity direction could be changed(Only adapt to standard type, large angle type unavailable)



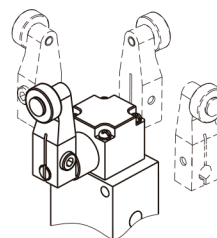
2. The rolling wheel could be installed at the inside of leverage



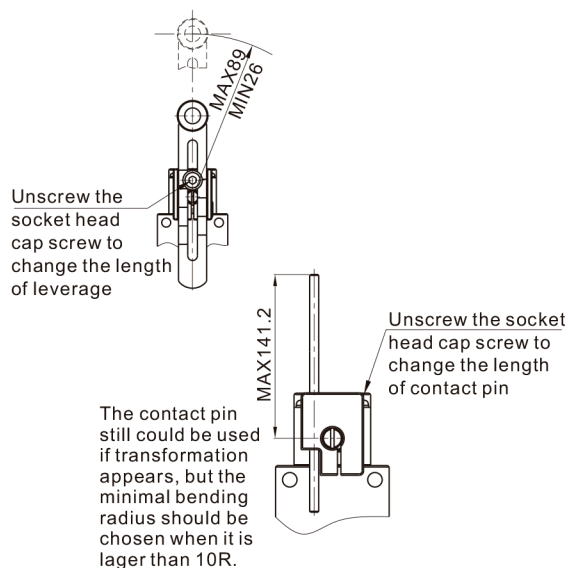
3. Installation position of leverage could be changed



4. Direction of head part could be changed



5. Length of contact pin could be changed



## Ordering code

VC	R	3	1	A	01
①	②	③	④	⑤	⑥

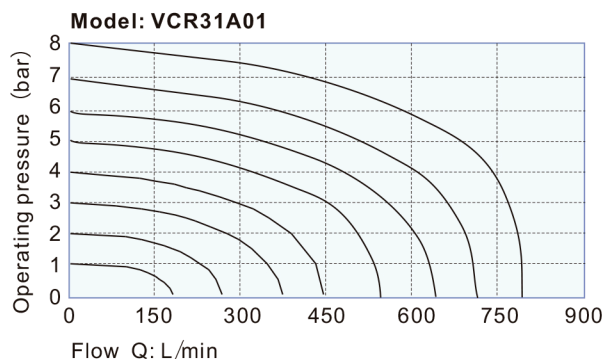
①	<b>Model</b> VC: Control Valve	④	<b>Series Code</b> 1: 1 Serie
②	<b>Actuator</b> R: Roller Type J: Adjustable Roller Type P: Contact Pin Adjustable Roller Type	⑤	<b>Directional control</b> A: 2 Positions
③	<b>Valve Type</b> 3: 3/2 Way	⑥	<b>Port Size</b> 01: 1/8" G

## VC SERIES

## Specification

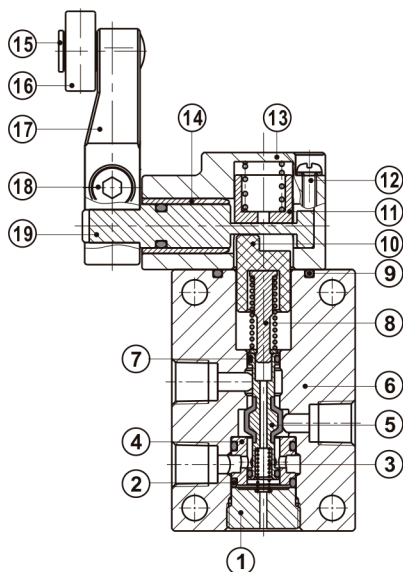
Valve	VMB	VMR	VMPF
Fluid	Air(to be filtered by 40 $\mu$ m filter element)		
Acting	External control direct acting type		
Port size	1/8"G		
Valve type	3 port 2 position		
Lubrication	Not required		
Operating pressure	-1~10bar(-15~145psi)		
Proof pressure	15bar(215psi)		
Temperature $^{\circ}$ C	-20~70		
Orifice size	6.0 mm <sup>2</sup> Cv $\leq$ 0.34)		
Material of body	Aluminum alloy		

## Flow chart



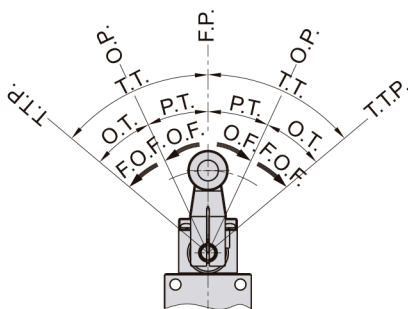
## Inner structure

## VCR



No.	Item
(1)	Bottom cover
(2)	O-ring
(3)	Spring
(4)	Spacer
(5)	Spool
(6)	Body
(7)	O-ring
(8)	Man drill
(9)	O-ring
(10)	Bushing
(11)	Spring holder
(12)	Screw
(13)	Front cover
(14)	Bushing
(15)	Shaft
(16)	Roller
(17)	Rocker arm
(18)	Screw
(19)	Rotation axis

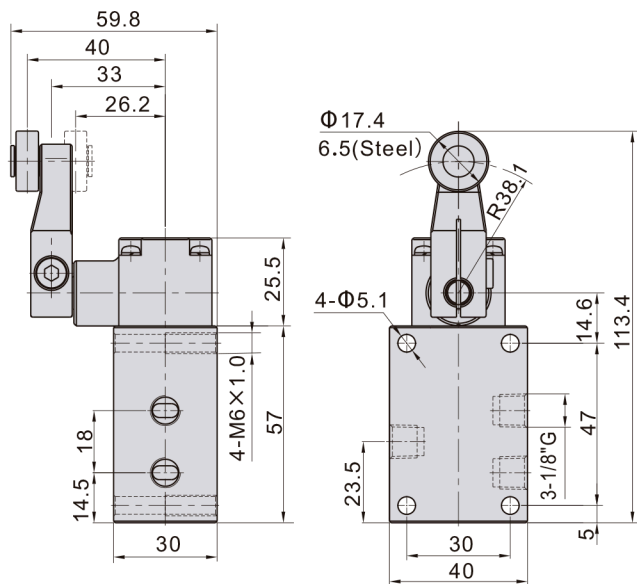
## Description of symbol



- F.P.** Free position: the position of control head when no external force applied;
- O.P.** Activity position: the position when the control head is applied with external force and the valve is switched;
- T.T.P.** Extreme position of actuation: position of control head when it is pushed until end position;
- O.F.** Actuation power: when driving from free position to actuation position, the operation power applied on control head;
- F.O.F.** Extreme actuation power: when driving from free position to extreme actuation position, the operation power applied on control head;
- P.T.** Free route: movement distance or rotation angle from free position of control head to actuation position;
- O.T.** Actuation route: movement distance or rotation angle from actuation position of control head to extreme actuation position;
- T.T.** Total route: movement distance or rotation angle from free position of control head to extreme actuation position;

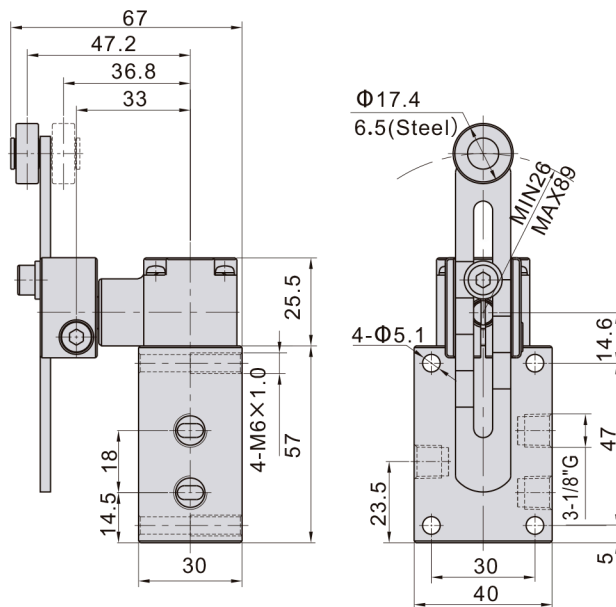
Dimensions

Model: VCR



Model\Item	F.O.F	P.T.	O.T.	T.T.
VCR31A01	20N	20°	30°	50°

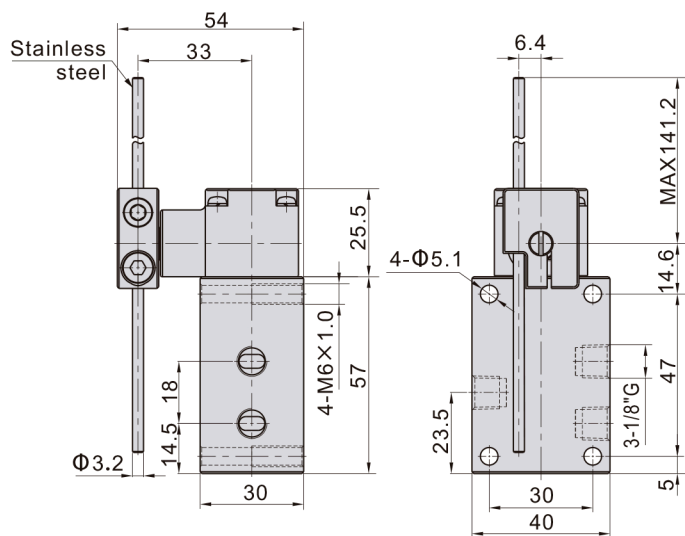
Model: VCJ



Model\Item	F.O.F	P.T.	O.T.	T.T.
VCJ31A01	20N	20°	30°	50°

Note ①: When the length of leverage is 38.1mm.

Model: VCP



Model\Item	F.O.F ①	P.T.	O.T.	T.T.
VCR31A01	2.3N	20°	30°	50°

Note ①: When the length of leverage is 141.2mm.